

See C 23-102
C 190-172 263
C 186-262

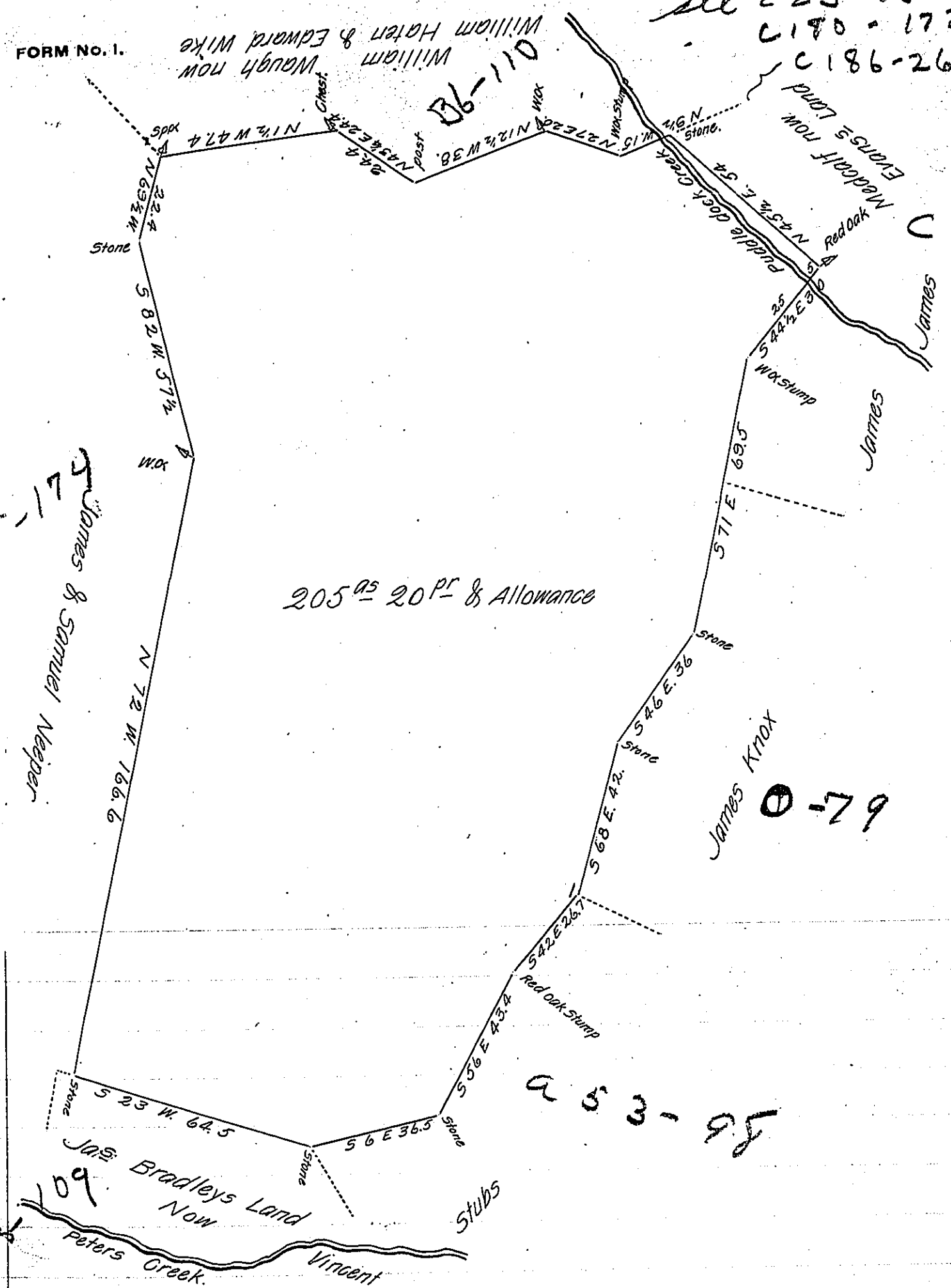
248-174
James & Samuel Nepper

205^{AS} 20^{PR} & Allowance

James Knox
0-79

253-95

C 212-32
109



The above Draught Contains 205 Acres & 20 perches and the usual Allowance of 6 per Ct. for Roads &c. Situated in Little Britain Township, Lancaster County, and lays chiefly between Peters Creek & Puddledock Creek. Surveyed in pursuance of a Warrant granted to John Reagh, dated May 18th 1749. Surveyed March 17th 1835. By
 To Jacob Spangler Esq. }
 Surveyor General Penn^a } James Galwell, D.S.

IN TESTIMONY that the above is a copy of the original remaining on file in the Department of Internal Affairs of Pennsylvania, made conformably to an Act of Assembly approved the 16th day of February, 1833, I have hereunto set my Hand and caused the Seal of said Department to be affixed at Harrisburg, this second day of October 1906.

Jacob P. Brown
 Secretary of Internal Affairs.